

Order forms and varieties information  
can be found online:

[www.tallahasseegardenclub.com](http://www.tallahasseegardenclub.com)

**Tallahassee Garden Club** Caladium Bulbs (tubers) are grown in Lake Placid Florida, the Caladium Capital of the world. The bulbs offered through Tallahassee Garden Club are #1 size (1 1/2" - 2 1/2") and come to you fresh from the farm in Lake Placid, Florida.

**General Information:** Caladiums are tropical hot weather summer foliage plants in the Araceae family, Aroideae subfamily, genus Caladium. Caladiums perform best in shade. Many varieties are sun tolerant, although they prefer morning sun rather than hot afternoon sun. The leaf is classified as either "Fancy" (large) or "Strap" (narrow). Fancy-leaf Caladium stems are attached within the blade of the leaf while the strap-leaf variety stem is at or near the edge of the leaf. In general, Fancy leaf Caladiums are less sun tolerant, develop faster, are less cold tolerant, are taller and more upright and last shorter periods in the landscape. Strap leaf Caladiums have elongated, narrow shaped leaves, are smaller, shorter, spread more, and are less upright.

**Growing Instructions:** Plant 6-12 inches apart, 3-5 inches deep (cover tubers with 1-2 inches of soil) when soil temperatures reach 70 degrees. Water frequently, keeping soil moist but not saturated. Plants can be fertilized with a soluble fertilizer to promote strong foliage growth. Fertilization is not necessary if planted in well-prepared beds. Bulbs may be planted in borders, in mass or in containers and hanging baskets.

Bulbs (tubers) may be over-wintered by digging up and storing. Dig bulbs before all leaves have lost their color. Dry for a week, and then remove dried foliage and dirt and store in peat moss or vermiculite. Bulbs should be stored where temperatures do not go below 50 degrees.

For additional information, contact

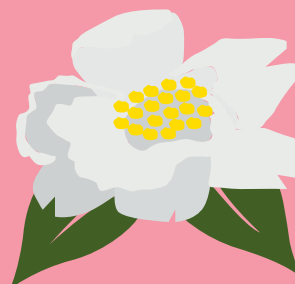
Beverly Burleson 850-591-1874

Linda Evans 850-980-0294

e-mail: [bbburleson@me.com](mailto:bbburleson@me.com)

[lindarevans@hotmail.com](mailto:lindarevans@hotmail.com)

*Front cover pictures show caladiums planted at the  
Healing Garden at the TMH Cancer Center.*



# Tallahassee GARDEN CLUB



## Annual Caladium Bulb Sale

**12 Varieties**

**10 Bulbs for \$15**

*(includes sales tax)*

*Available for Pick Up*

*March 21 - 10 am - 2 pm • March 22 - 9 am - 11 am*

**Orders accepted January 13, 2025 - February 20, 2025**

# Caladium Varieties

## RED



**Red Flash** - Dark red central veins with many pink spots and dark green margins. Tall, bushy, upright and does not like to be crowded. Full Sun.

## PINK



**Carolyn Whorton** - Medium toned pink blotches, red veins, green margins, large upright leaves, tall, sun tolerant.

## WHITE



**White Queen** - Creamy white, green netted veins. Dark red central veins. Center can bleed to pink. Tall, large leaves. Sun tolerant.

## STRAP LEAF VARIETIES



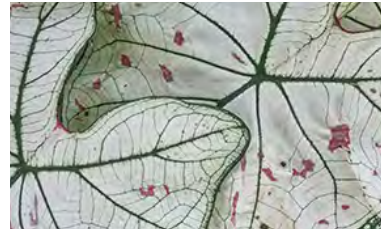
**Gingerland** - Creamy white with white veins and many red spots with green margins. Slightly upright and bushy. Medium height, Sun



**Florida Sunrise** - Dark green leaves that are splashed with pink. Partial Sun - Shade



**Rosebud** - Medium sized leaves with dominant dark rose veins on frosty light green background with a dark green border. Shade to Full Sun.



**Marie Moir** - White with green veins and red spots. Partial Sun - Shade. VERY RARE VARIETY.



**Mixed Variety** - Splotchy pink with bright pink center and green border. Full Sun - Shade



**John Peed** - Dark rose-red center with dark red veins and wide medium margins. Has medium to large leaf. Partial Sun-Shade.



**Kathleen** - Pink with green margins. Partial Sun - Shade



**White Christmas** - Very large leaves with dominant wide green veins on a white background. Tall with large upright leaves. Shade to Partial Shade.



**Florida Sweetheart** - Mauve pink with green margins. Full Sun - Shade

*If you are not buying caladiums this year, please consider a donation.*

*Proceeds earmarked for "Gold Star Marker" (family's of deceased vets)*

Name \_\_\_\_\_

Address \_\_\_\_\_

Email \_\_\_\_\_

Phone \_\_\_\_\_

Garden Circle (if applicable) \_\_\_\_\_

\_\_\_\_\_ #BAGS ORDERED (\$15 per bag of 10 bulbs)

COST=\$\_\_\_\_\_ Total

PAID BY:  CASH  CHECK

(payable to your circle, or to the Tallahassee Garden Club if you are not in a circle)

Return to your Caladium Bulb Chair if you are in a circle.

Or send to Beverly Burleson 2017 W. Randolph Circle, Tallahassee, FL 32308

**If you are in a circle, your caladium bulb chairperson will pick up all orders for your circle.**

Net profits benefit the Tallahassee Garden Club

**Contact Info:**

Beverly Burleson 850-591-1874, bbburleson@me.com or

Linda Evans 850-980-0294, lindarevans@hotmail.com

**Order forms due Wednesday, February 20, 2025**

**Varieties Order Form – 10 bulbs per bag**

**Fancy 18-22” leaf varieties**

**REDS**

**#Bags Ordered**

Red Flash \_\_\_\_\_

John Peed \_\_\_\_\_

Florida Sunrise \_\_\_\_\_

**PINKS**

Carolyn Whorton \_\_\_\_\_

Rosebud \_\_\_\_\_

Kathleen \_\_\_\_\_

**WHITES**

White Queen \_\_\_\_\_

Marie Moir \_\_\_\_\_

White Christmas \_\_\_\_\_

**Strap/Lance leaf varieties 14-17”**

Gingerland \_\_\_\_\_

Mixed Variety \_\_\_\_\_

Florida Sweetheart \_\_\_\_\_

*If you are not buying caladiums this year, please consider a donation.*

