

Order forms and varieties information can be found online:

[www.tallahasseegardenclub.com](http://www.tallahasseegardenclub.com)

**Tallahassee Garden Club** Caladium Bulbs (tubers) are grown in Lake Placid Florida, the Caladium Capital of the world. The bulbs offered through Tallahassee Garden Club are #1 size (1½" - 2½") and come to you fresh from the farm in Lake Placid, Florida.

**General Information:** Caladiums are tropical hot weather summer foliage plants in the Araceae family, Aroideae subfamily, genus Caladium. Caladiums perform best in shade. Many varieties are sun tolerant, although they prefer morning sun rather than hot afternoon sun. The leaf is classified as either "Fancy" (large) or "Strap" (narrow). Fancy-leaf Caladium stems are attached within the blade of the leaf while the strap-leaf variety stem is at or near the edge of the leaf. In general, Fancy leaf Caladiums are less sun tolerant, develop faster, are less cold tolerant, are taller and more upright and last shorter periods in the landscape. Strap leaf Caladiums have elongated, narrow shaped leaves, are smaller, shorter, spread more, and are less upright.

**Growing Instructions:** Plant 6-12 inches apart, 3-5 inches deep (cover tubers with 1-2 inches of soil) when soil temperatures reach 70 degrees. Water frequently, keeping soil moist but not saturated. Plants can be fertilized with a soluble fertilizer to promote strong foliage growth. Fertilization is not necessary if planted in well-prepared beds. Bulbs may be planted in borders, in mass or in containers and hanging baskets.

Bulbs (tubers) may be over-wintered by digging up and storing. Dig bulbs before all leaves have lost their color. Dry for a week, and then remove dried foliage and dirt and store in peat moss or vermiculite. Bulbs should be stored where temperatures do not go below 50 degrees.

For additional information, contact

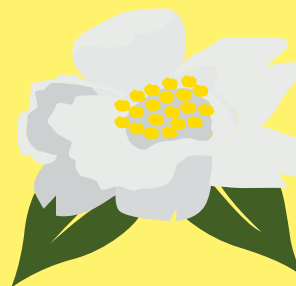
Beverly Burleson 850-591-1874

Linda Evans

e-mail: [bburleson@me.com](mailto:bburleson@me.com)

[lindarevans@hotmail.com](mailto:lindarevans@hotmail.com)

*Front cover pictures show caladiums planted at the Healing Garden at the TMH Cancer Center.*



# Tallahassee GARDEN CLUB



## *Annual Caladium Bulb Sale*

**16 Varieties**

**10 Bulbs for \$15**

*(includes sales tax)*

*Available for Pick Up - TBA*

**Orders accepted January 11, 2024 - February 22, 2024**



# Caladium Varieties

## RED



**Red Flash** – Dark red central veins with many pink spots and dark green margins. Tall, bushy, upright and does not like to be crowded. Full Sun.



**New Freida Hemple** – Deep red with green margins. Prefers shade.

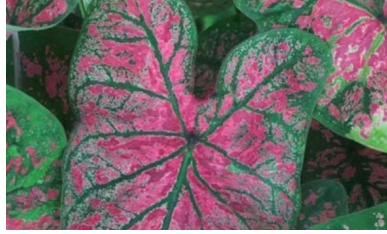


**John Peed** – Dark rose-red center with dark red veins and wide medium margins. Has medium to large leaf. Partial Sun-Shade.



**New Festiva** – Red with green veins and green margins. Full sun - shade.

## PINK



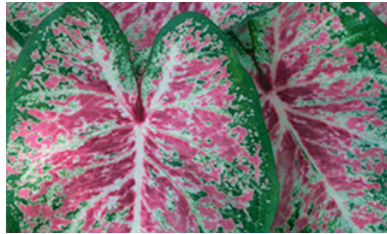
**New Florida Roselight** – Large pink blotches on green background. Medium-Large. Partial sun - shade.



**Carolyn Whorton** – Medium toned pink blotches, red veins, green margins, large upright leaves, tall, sun tolerant.

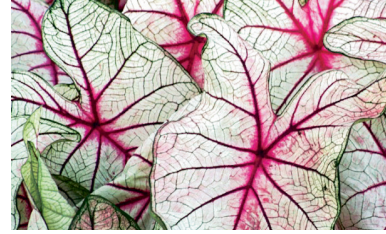


**Rosebud** – Medium sized leaves with dominant dark rose veins on frosty light green background with a dark green border. Shade to Full Sun.

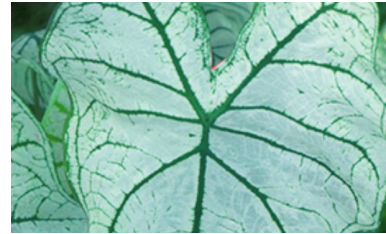


**Pink Cloud** – Pink with green margins. Tolerates some sun and has medium to large leaf. Sun-Shade.

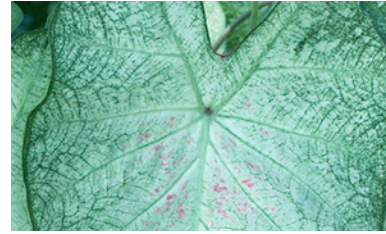
## WHITE



**White Queen** – Creamy white, green netted veins. Dark red central veins. Center can bleed to pink. Tall, large leaves. Sun tolerant.



**Candidum** – Large white leaf with green veins. Grows 12-24". Partial Sun-Shade.



**New June Bride** – White with green margins and pink dots. Part Sun-Shade



**White Christmas** – Very large leaves with dominant wide green veins on a white background. Tall with large upright leaves. Shade to Partial Shade.

## STRAP LEAF VARIETIES



**New Gingerland** – Creamy white with white veins and many red spots with green margins. Slightly upright and bushy. Medium height, Sun



**Red Ruffle** – Red with green margins. Medium leaf that grows tall. Partial Sun-Shade.



**Miss Muffet** – Chartreuse green with varying red and white veins, red spots. Compact, bushy, low grower, semi-shade.



**White Wing** – Ruffled white leaves with very pale rose central veins and green mottled margin. Upright, very full. Shade to Full Sun.