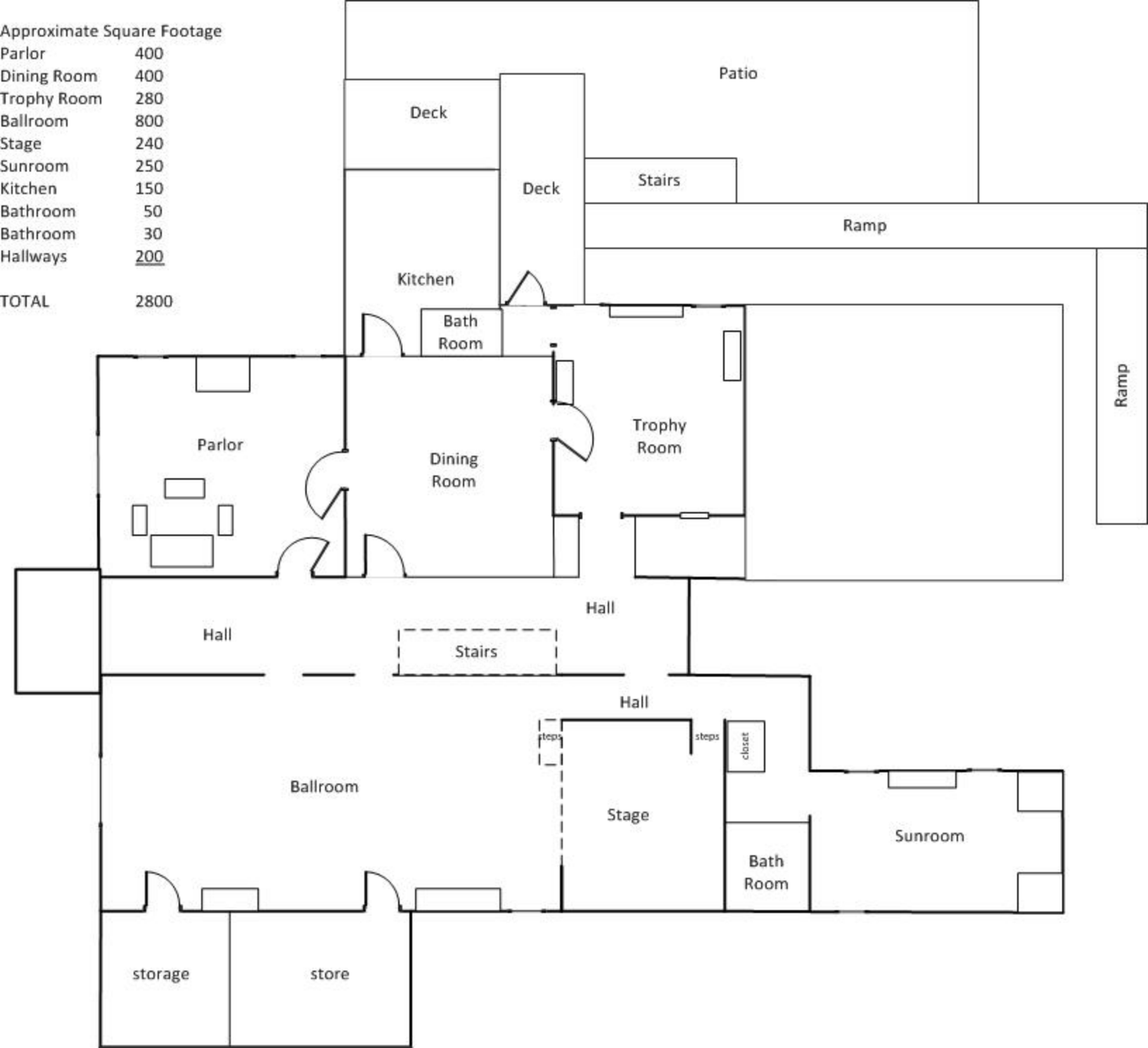
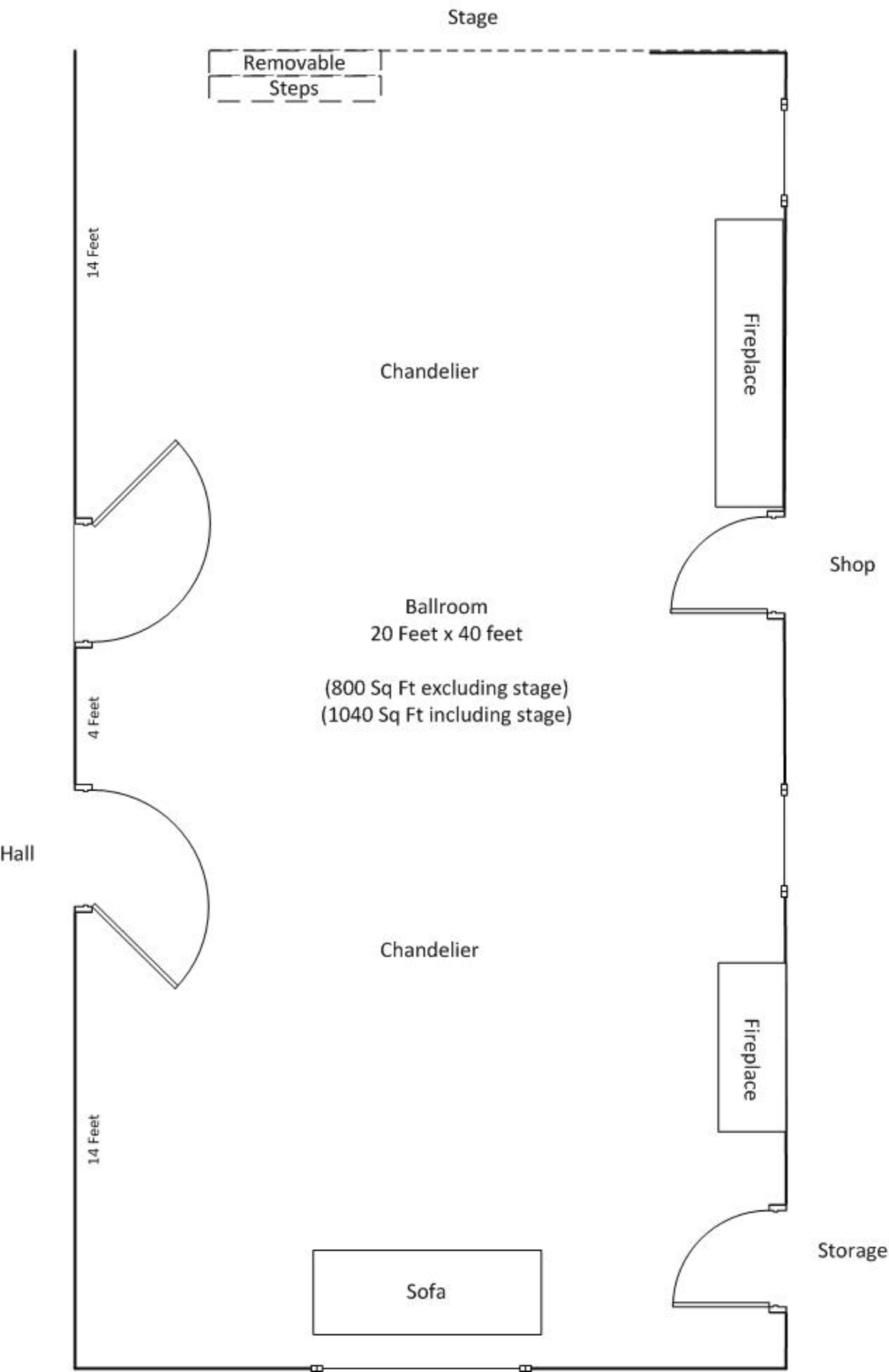


Approximate Square Footage

Parlor	400
Dining Room	400
Trophy Room	280
Ballroom	800
Stage	240
Sunroom	250
Kitchen	150
Bathroom	50
Bathroom	30
Hallways	<u>200</u>
TOTAL	2800

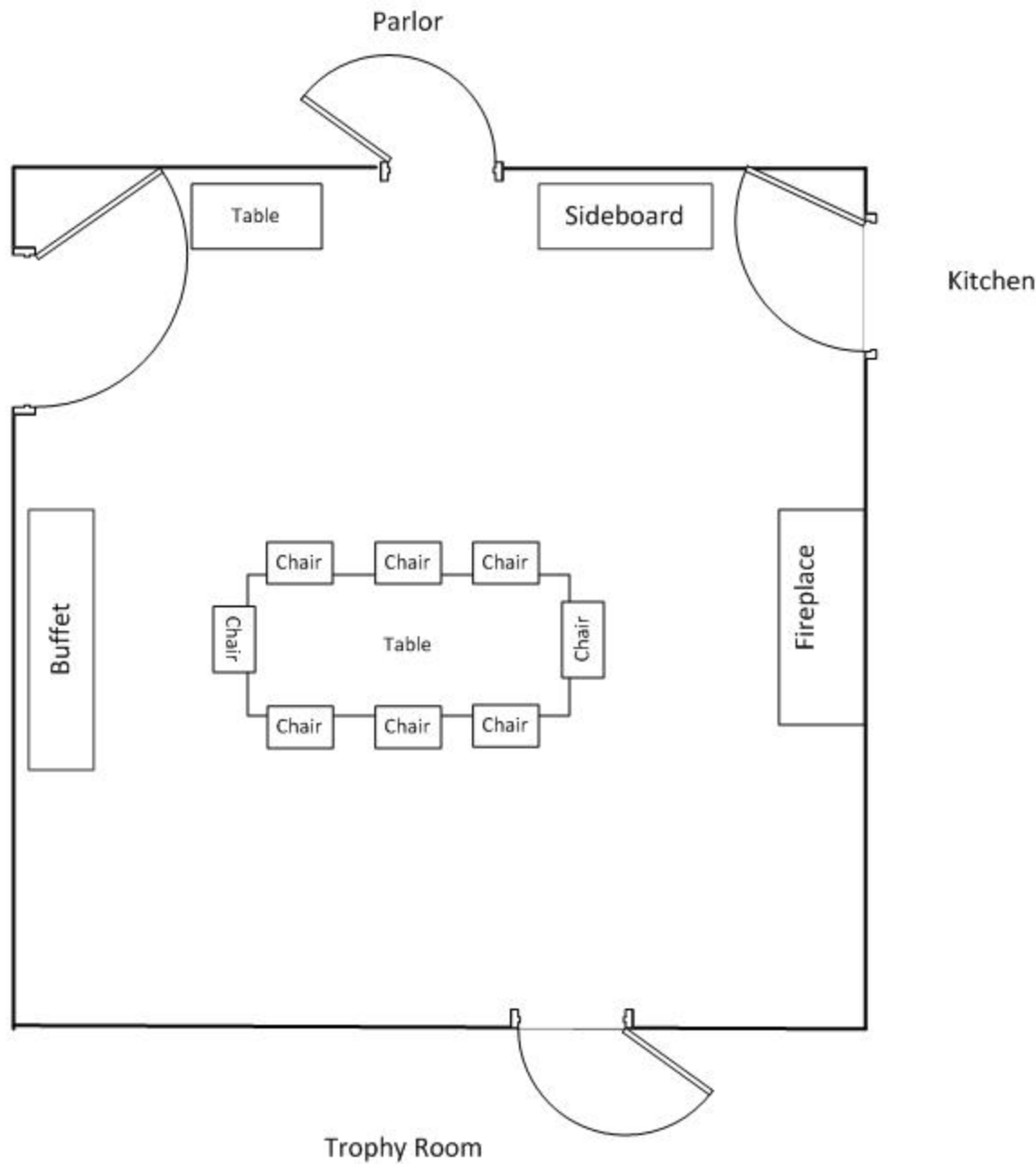




Dining Room

20 Feet by 20 Feet
(400 Sq Ft)

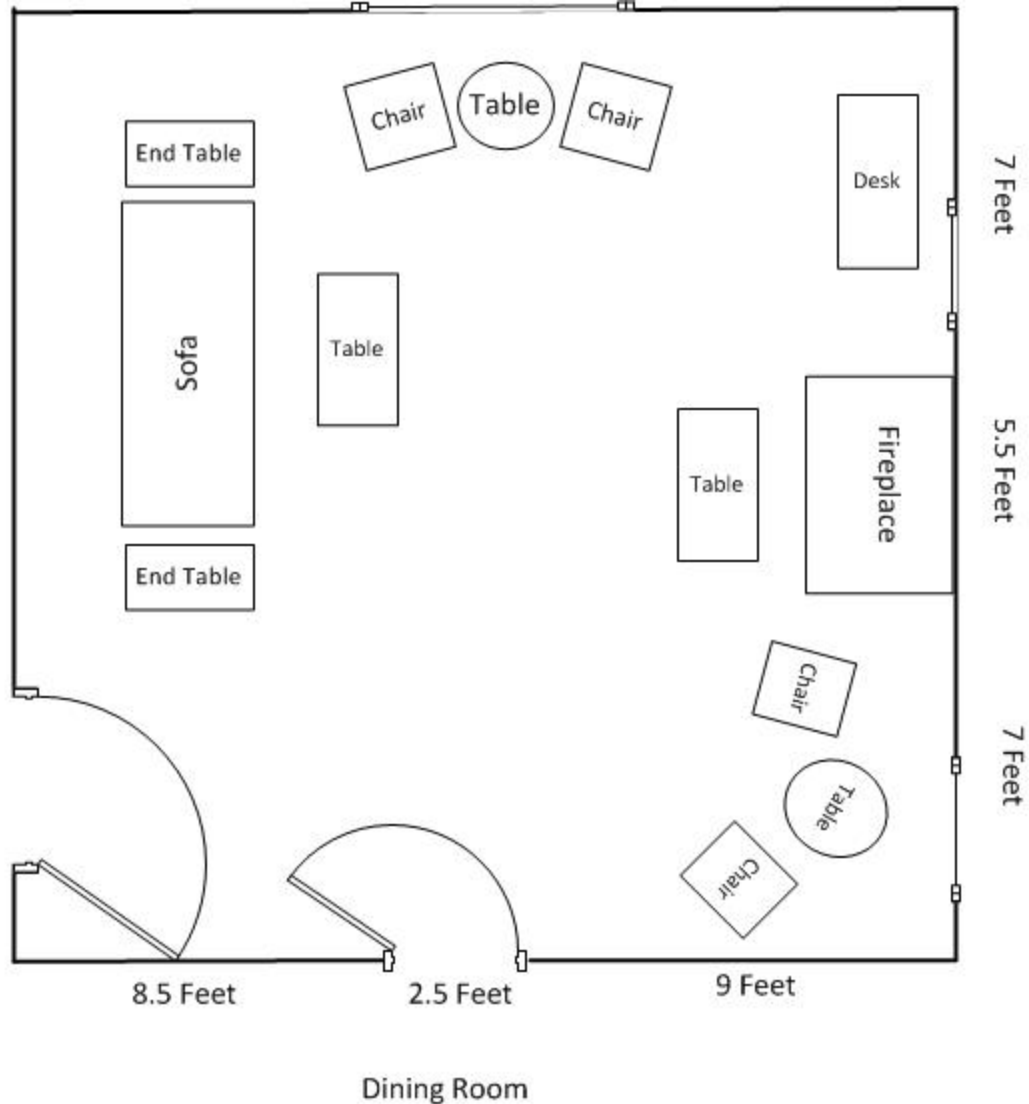
Foyer



PARLOR

20 Feet by 20 Feet
(400 Sq Ft)

Foyer



A floor plan diagram showing a stage area. The stage is a large rectangle on the right side, labeled 'STAGE' and '15 Feet x 16 Feet (240 Sq Ft)'. To the left of the stage is a large open area labeled 'OPEN TO BALLROOM'. At the top left, there are three vertical rectangular sections labeled 'STEPS'. At the bottom left, there is a dashed rectangular area labeled 'Removable Steps'.

STEPS

STAGE

15 Feet x 16 Feet
(240 Sq Ft)

Removable

Steps

OPEN TO BALLROOM

Bathroom
(50 Sq Ft)

Opening to
Bathroom

Desk

SUNROOM

12.8 Feet x 22 Feet
(250 Sq Ft)

Chair

Chair

Table

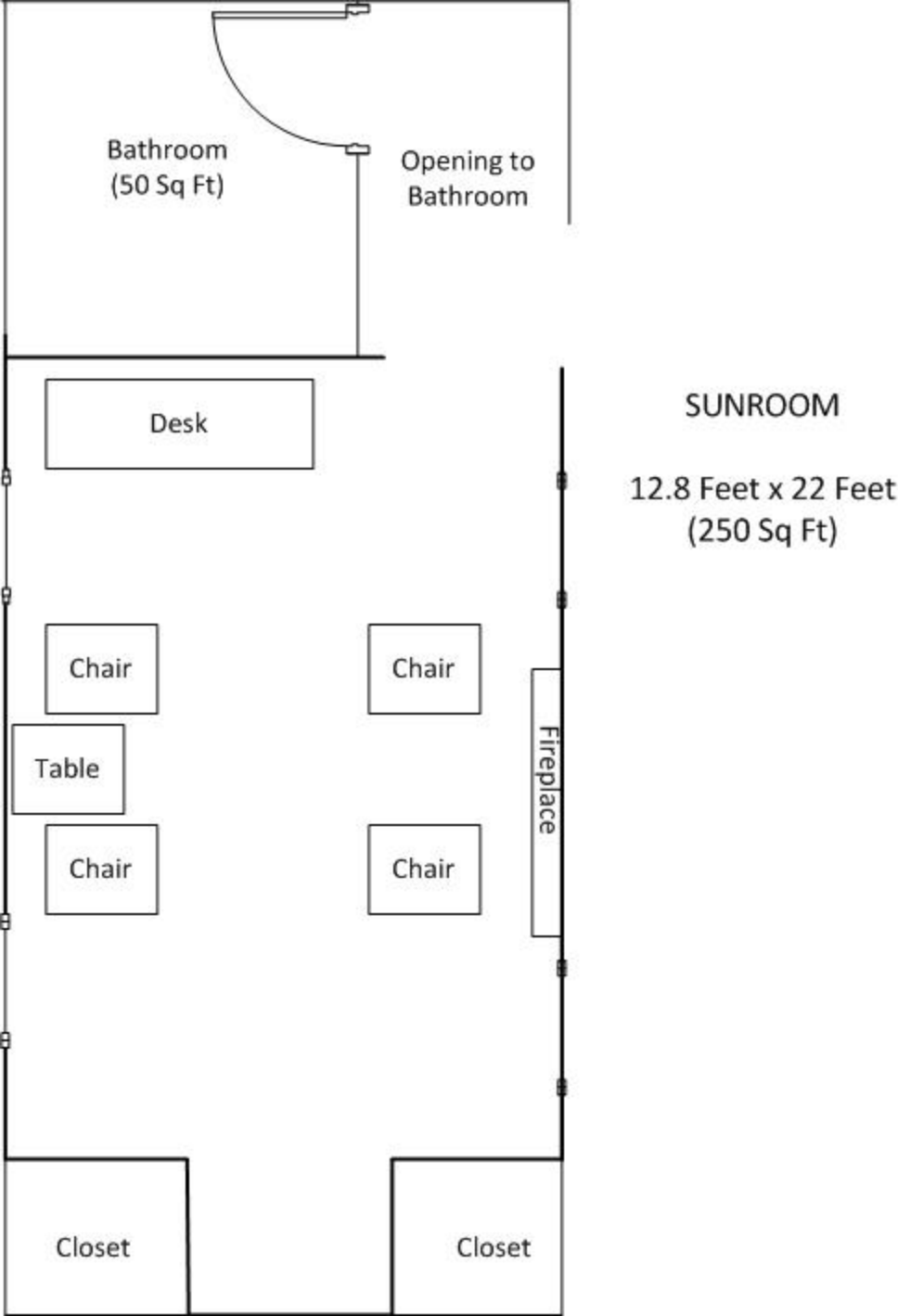
Fireplace

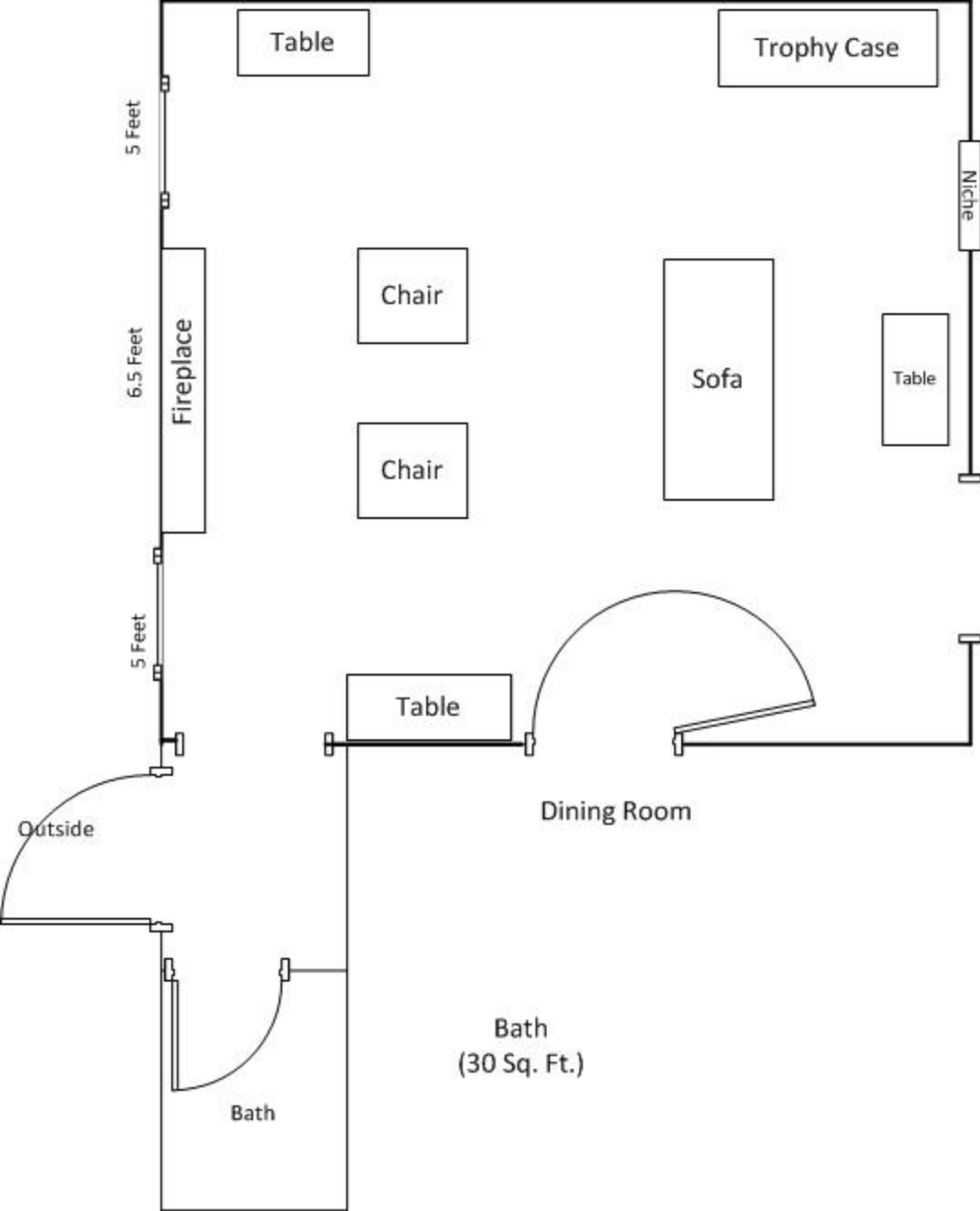
Chair

Chair

Closet

Closet





TROPHY ROOM

16.5 feet x 17 feet

(280 Sq. Ft.)

Closet Foyer

Dining Room

Bath
(30 Sq. Ft.)

Outside

Bath

Table

Trophy Case

Niche

Fireplace

Chair

Sofa

Table

Chair

Table

5 Feet

6.5 Feet

5 Feet